



**2010
ANNUAL SECURITY
REPORT**

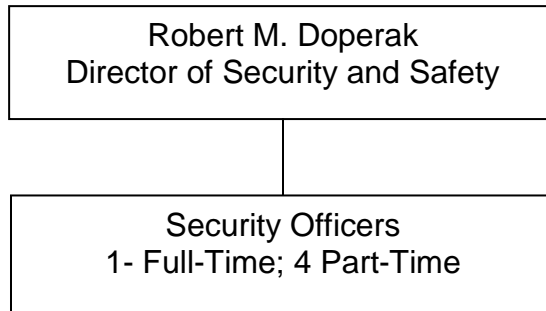
101 Community College Way
Johnstown, PA 15904

Published by the Office of Security and Safety

September, 2011

Table of Contents

3	Introduction
4	Emergency Notification / Incident Reporting Procedures / Alcohol and Drug Policies
7	Sexual Harassment Policy
9	Rape
10	Indecent Assault / Sexual Assault Prevention Program
12	Emergency Contacts
14	Important Phone Numbers / Campus Access / Maintenance and Security of Campus Facilities
16	2010 Crime Statistics
17	2009 Crime Statistics
18	2008 Crime Statistics



Jeanne Clery / Annual Security Report

INTRODUCTION:

This report was generated by the Pennsylvania Highlands Community College Office of Security and Safety in compliance with the Jeanne Clery Disclosure of Campus Security Policy and Crime Statistics Act. This report contains information in accordance with 20 U.S.C. 1092 (F)(7), Section 485 (f), Campus Security Policy and Campus Crime Statistics as amended, and Pennsylvania Law 448, No. 73 as amended. The report may be obtained from the College website at www.penhighlands.edu. Printed copies may be obtained by contacting the Office of Security and Safety at 814-262-6427 or by emailing the Office of Security and Safety at security@penhighlands.edu. This report was prepared in cooperation with local law enforcement agencies having jurisdiction over our four sites. Each year, an e-mail notification is sent to all enrolled students, staff, and faculty announcing the availability of the report.

Pennsylvania Highlands Community College had approximately 3,463 students enrolled during the 2010 academic year. Of the students who attended our College, 1,763 were full-time and 1,700 were part-time. The College does not provide student housing and therefore all students are classified as commuters. The college employs approximately 94 full-time employees and 25 part-time staff. The College also employs approximately 98 adjunct instructors. Pennsylvania Highlands Community College exists in four locations. The main campus is located in Richland Township, Johnstown, PA. The Ebensburg Education Center (EEC) is located in Cambria Township, Ebensburg, PA. The Somerset Center is located in Somerset, PA. And the Huntingdon Center, Huntingdon, PA.

The Office is under the leadership of the Director of Security and Safety who reports directly to the Vice President for Student Services. The Director of Security and Safety is responsible for coordinating the daily operations and activities of the Security and Safety office. Current hours of operation for the Richland Campus are from 7:30am - 9:30pm, Monday through Thursday; from 7:30 am – 5:30 pm on Fridays and from 8:00 am – 4:00 pm on Saturdays. The Ebensburg Education Center is operational Mondays through Thursdays from 7:30 am to 10:00 pm and Fridays 7:30 am to 5:00 pm. Currently two full-time and four part-time security officers proactively patrol the Richland Campus and the Ebensburg Education Center. The Huntingdon Center is open Monday through Thursday between the hours of 8:00 am to 6:00 pm and Friday 8:00 am to 5:00 pm. The hours of operation for the Somerset Center are Monday 8:00 am to 7:00 pm, Tuesday through Thursday 8:00 am to 6:00 pm, and Friday 8:00 am to 5:00 pm.

Security officers patrol the campus and education center and provide security and safety services. Officers routinely patrol the interior and exterior spaces at both locations and respond to accidents, injuries, and any other incidents which may occur. The security officers are trained to respond to emergencies and provide immediate intervention as well as to request outside assistance from local police, fire, and emergency medical services personnel as needed. The security officers are trained in first aid, cardiopulmonary resuscitation (CPR), automated external defibrillation (AED), and basic defensive tactics. The Office of Security and Safety is responsible for monitoring, maintaining, and enforcing campus alarm systems, parking regulations and crime reporting/statistics gathering.

EMERGENCY NOTIFICATIONS/TIMELY WARNINGS:

Multiple efforts are undertaken to notify members of the College Community regarding crimes and related issues. We have been fortunate to report a very low significant crime rate but are prepared, if necessary, to release information which may be used by students and employees to reduce their risk of harm. Once notified of an emergency, the Security and Safety Director will report to the Vice President of Student Services, to relay the information on to him. The Vice President will then consults with the President of the College to determine the appropriate course of action. In such instances, information will be disseminated to the College Community using both electronic mail and cellular text messages. The decision to issue a warning or alert is made by the Vice President for Student Services, in consultation with the President. Messaging services may also be utilized during inclement weather which necessitates school closings during normal operating hours. In an effort to disseminate emergency information to the larger community and our students who are off-campus, the local media will be notified immediately through our established emergency notification process. We will conduct a simulated lockdown exercise semi-annually as recommended by the Department of Education.

REPORTING OF CRIMES / INCIDENTS

To report a crime or emergency contact the Office of Security and Safety by telephone at (814) 262-6427 or via email to security@pennhighlands.edu. Campus emergencies which require immediate attention are to be reported by dialing either the Richland emergency line at ext. 5555 or the Ebensburg Education Center emergency line at ext.3333 and also contacting 911. The Huntingdon Center and Somerset Center emergencies are to dial 911. The Richland Campus also has three emergency call stations positioned strategically in parking lots B, C and D. Incidents may also be reported in person at to Security and Safety staff at the Richland Campus and Ebensburg Education Center.

CAMPUS ENFORCEMENT AUTHORITY

All students and employees are encouraged to report all on-campus crime and suspicious activities. Security Officers do not have arrest powers or carry weapons, but do possess the authority to detain an individual until local law enforcement officials arrive. The Office of Security and Safety has a good working relationship with both local and state law enforcement agencies and diligently cooperates with them to maximize the effectiveness of police services to the College Community. The Security Officers are authorized to obtain information to determine whether persons have lawful business at the college and to investigate accidents, Student Code of Conduct violations, and crimes which occur on campus. The Security Officers at the Richland Campus are also authorized to enforce parking regulations.

All crimes occurring on campus will be investigated by the Office of Security and Safety and will be referred to local law enforcement officials when warranted. Infractions of the Student Code of Conduct are also investigated and findings will be forwarded to Vice President for Student Services for further action.

ALCOHOL POLICY:

In compliance with Pennsylvania laws and the Drug Free Schools and Communities Act, the College does not permit the consumption of alcoholic beverages by students (or their guests) on campus. The College recognizes and cooperates with local law enforcement authorities in their efforts pertaining to the illegal consumption or possession of alcoholic beverages. The College has adopted a zero tolerance policy.

DRUG POLICY:

Pennsylvania Highlands Community College maintains a drug-free workplace. The unlawful manufacture, distribution, dispensation, possession, or use of drugs and alcohol is strictly prohibited at any workplace, course site, facility, or campus activity under the authority of the Pennsylvania Highlands Community College.

The illegal possession, manufacture, distribution, or use of drugs or narcotics by students constitutes unacceptable conduct and such students are subject to disciplinary measures, including suspension, by the College. Pennsylvania amended its law concerning drugs in 1972. As passed, the law states that if a person possesses or distributes a small amount of marijuana (30 grams--approximately one ounce, or less) but does not sell it, the person is guilty of a misdemeanor and is subject to a maximum penalty of 30 days in jail or a \$500.00 fine, or both. Selling marijuana and illegally possessing or distributing any other type of drug is a more serious violation and carries heavier penalties.

The purpose of this summary is to provide the students and employees of Pennsylvania Highlands Community College with general information on applicable laws. Although every effort has been made to provide accurate information at the time of printing, this information may at any time be superseded by changes in state and/or federal laws. Ultimately, each student or employee has the responsibility to remain informed concerning changes in the law. Those with specific legal questions are encouraged to seek the services of an attorney.

Controlled Substances Act Schedule	1st Offense	2nd Offense	Quantity	Drug	Quantity	1st Offense	2nd Offense
I and II	*Not less than 5 years. Not more than 40 years *If death or serious injury, not less than 20 years or more than life *Fine of not more than \$2 million individual, \$5 million other than individual	*Not less than 10 years. Not more than life *If death or serious injury, not less than life *Fine of not more than \$4 million individual \$10 million other than individual	10-99 gm pure or 100-999 gm mixture	Methamphetamine	100 gm or more pure of 1 kg or more mixture	*Not less than 10 years. Not more than life. *If death or serious injury, not less than 20 years or more than life. *Fine of not more than \$4 million individual, \$10 million other than individual	*Not less than 20 years. Not more than life *If death or serious injury, not less than life *Fine of not more than \$8 million individual, \$20 million other than individual.
			100-999 gm mixture	Heroin	1 kg or more mixture		
			500-4,999 gm mixture	Cocaine	5 kg or more mixture		
			5-49 gm mixture	Cocaine Base	50 gm or more mixture		
			10-99 gm pure or 100-999 gm mixture	PCP	100 gm or more pure or 1 kg or more mixture		
			1-9 gm mixture	LSD	10 gm or more mixture		
			40-399 gm mixture	Fentanyl	400 gm or more mixture		
			10-99 gm mixture	Fentanyl Analogue	100 gm or more mixture		

Federal Penalties and Sanctions for Illegal Trafficking and Possession of a Controlled Substance Federal Trafficking Penalties (As of January 1, 1996)

*The Controlled Substances Act (1970) places all substances regulated under federal law into one of five schedules based on the substance's medical use, potential for abuse, and safety or dependence liability.

Controlled Substances Act Schedule	Drug	Quantity	1st Offense	2nd Offense
I and II	Others (law does not include marijuana, hashish, or hash oil)	Any	*Not more than 20 years *If death or serious injury, not less than 20 years, not more than life *Fine \$1 million individual, \$5 million not individual	*Not more than 30 years *If death or serious injury, life *Fine \$2 million individual, \$10 million not individual
III	All (included in Schedule III are anabolic steroids, codeine and hydrocodone with aspirin or Tylenol®, and some barbiturates)	Any	*Not more than 5 years *Fine not more than \$250,000 individual, \$1 million not individual	*Not more than 10 years *Fine not more than \$500,000 individual, \$2 million not individual
IV	All (included in Schedule IV are Darvon®, Talwin®, Equanil®, Valium®, and Xanax®)	Any	*Not more than 3 years *Fine not more than \$250,000 individual, \$1 million not individual	*Not more than 6 years *Fine not more than \$500,000 individual, \$2 million not individual
V	All (over-the-counter cough medicines with codeine are classified in Schedule V)	Any	*Not more than 1 year *Fine not more than \$100,000 individual, \$250,000 not individual	*Not more than 2 years *Fine not more than \$200,000 individual, \$500,000 not individual

Federal Penalties and Sanctions for Illegal Trafficking and Possession of a Controlled Substance Federal Trafficking Penalties - Marijuana (includes hashish and hashish oil) (as of January 1, 1996)

Description	Quantity	1st Offense	2nd Offense
Marijuana	1,000 kg or more mixture; or 1,000 or more plants	*Not less than 10 years, not more than life *If death or serious injury, not less than 20 years, not more than life *Fine not more than \$4 million individual, \$10 million other than individual	*Not less than 20 years, not more than life *If death or serious injury, not more than life *Fine not more than \$8 million individual, \$20 million other than individual
Marijuana	100 kg to 999 kg mixture; or 100-999 plants	*Not less than 5 years, not more than 40 years *If death or serious injury, not less than 20 years, not more than life *Fine not more than \$2 million individual, \$5 million other than individual	*Not less than 10 years, not more than life *If death or serious injury, not more than life *Fine not more than \$4 million individual, \$10 million other than individual
Marijuana	50 to 99 kg mixture ----- 50 to 99 plants	*Not more than 20 years *If death or serious injury, not less than 20 years, not more than life *Fine \$1 million individual, \$5 million other than individual	*Not more than 30 years If death or serious injury, not more than life Fine \$2 million individual, \$10 million other than individual
Marijuana	Less than 50 kg mixture	*Not more than 5 years *Fine not more than \$250,000, \$1 million other than individual	*Not more than 10 years *Fine \$500,000 individual, \$2 million other than individual
Hashish	10 kg or more		
Hashish Oil	1 kg or more		

COLLEGE POLICY ON SEXUAL HARASSMENT

The Pennsylvania Highlands Community College Sexual Harassment Policy exists to ensure that consistent procedures are followed when a report of a sexual assault is received. These procedures have been adopted to meet the medical, safety, legal, and psychological needs of the victim. This policy applies to any member of the Pennsylvania Highlands Community College Community, including all students and employees.

Sexual harassment is a violation of the Title VII of the Civil Rights Act of 1964 and Title IX of the Education Amendment of 1972. These laws include prohibition of discrimination in employment and educational program and services on the basis of sex.

The following guidelines apply equally to students and employees:

Sexual harassment is defined as unwelcome sexual advances, requests for sexual favors, and other verbal and physical conduct of a sexual nature when:

1. Submission to the conduct is either an explicit or implicit term condition of employment, instruction of participation in College activities;
2. Submission to or rejection of the conduct is used as a basis for making employment or academic decisions affecting the person rejecting or submitting to the conduct; or
3. The conduct has the purpose or effect of unreasonably interfering with the affect person's academic or work performance, or creating an intimidating, hostile or offensive college environment.

Sexual harassment or sexual misconduct will not be tolerated within the College Community either in any collegial setting involving faculty, staff, administrators, or students.

Types of Sexual Harassment & Assault

Harassment by Phone or Email while on Campus

While harassing phone calls or email communications are often mistakenly considered pranks, Pennsylvania state law considers **Harassment** as a *third degree misdemeanor* offense.

The Pennsylvania Crimes Code defines the following to be '2709 Harassment (by communicating):

Definition: "Communicates." Conveys a message without intent of legitimate communication or address by oral, nonverbal, written or electronic means, including telephone, electronic mail, Internet, facsimile, telex, wireless communication or similar transmission.

Offense defined.—A person commits the crime of harassment when, with intent to harass, annoy or alarm another, the person:

- (4) Communicates to or about such other person any lewd, lascivious, threatening, or obscene words, language, drawings or caricatures;
- (5) Communicates repeatedly in an anonymous manner;
- (6) Communicates repeatedly at extremely inconvenient hours; or

(7) Communicates repeatedly in a manner other than specified in (4), (5) and (6).

Harassment under (4), (5), or (6) is punishable by imprisonment of up to one (1) year.

The following suggestions are given for dealing with a harassing call or e-mail:

1. Never engage the caller/e-mail sender in conversation or correspondence. The key to handling these types of calls/e-mails is *NOT TO REACT TO THEM*. IF YOU REACT, YOU COULD ENCOURAGE THE CALLER/E-MAIL SENDER TO CONTINUE.
2. Never answer personal questions and/or give out any type of information to a caller/e-mail sender who is unknown.
3. When you realize the call/e-mail is intended to harass you, HANG UP IMMEDIATELY or do not respond.
4. If necessary, call the telephone company and report the incident(s).
5. Determine the pattern of calls/e-mails by keeping track of the date and time you receive them. Print out hardcopies of e-mails you receive. This can help you narrow the possible suspects and aids in law enforcement investigation. Keep a log to help you chart harassing calls/e-mails.
6. Contact the Office of Security and Safety at 262-6427.

If you receive threatening or obscene calls or e-mail, contact the Office of Security and Safety immediately. Most harassing calls/e-mails, do not present a physical threat to the victim's safety. The caller/e-mail sender often knows the victim. Occasionally, the caller/e-mail sender simply contacts the victim randomly. If you feel the harassment is serious enough, you may also contact the local police department.

Sexual Misconduct

Members of the College community are advised that coercive and unwelcome sexual contacts are unlawful and will not be tolerated. Sexual offenses will be immediately pursued through both criminal and College disciplinary procedures. The College will not shield or protect its members from legal consequences of these actions and will cooperate fully in the investigation and prosecution of these cases. College disciplinary sanctions shall be made independently for the same violation.

Physical or Sexual Assault

Physical or sexual assault on faculty, staff, or another student or visitor is in violation of the Student Code of Conduct. No student, faculty, staff member or visitor shall force or threaten to force another student, faculty, staff member or visitor to have sexual contact against any persons will. Any student charged with sexual assault on or off campus may be prosecuted under criminal statutes and disciplined under the College's Student Code of Conduct. Even if the criminal justice authorities choose not to prosecute, the College reserves the right to pursue any disciplinary action.

Students or employees who feel they have been the victim of sexual assault should contact the Office of Security and Safety.

The "Campus Sex Crimes Prevention Act" (Public Law 106-386 section 1601) is a federal law enacted on October 28, 2000, providing for the tracking of convicted, registered sex offenders enrolled as students at institutions of higher education, or working or volunteering on property owned or controlled by the College. It also amends the Jacob Wetterling Crimes Against Children and Sexually Violent Offender Registration Act, Jeanne Clery Disclosure of Campus Security Policy and Campus Crime Statistics Act, and the Family Educational Rights and Privacy Act of 1974.

Information regarding sexually violent predators within the Commonwealth of Pennsylvania may be obtained from the Pennsylvania State Police Web Site found at <http://www.psp.state.pa.us>.

Specifically, Pennsylvania's Megan's Law, 42 PA.C.S. § 9799.1, requires the State Police to create and maintain a registry of persons who have either been convicted of, entered a plea of guilty to, or adjudicated delinquent of certain sex offenses listed in 42 PA.C.S. §§ 9795.1 and 9795.2 This information may be viewed on the Internet at <http://www.pameganslaw.state.pa.us/>.

Rape

DEFINITION: Rape, according to the Pennsylvania Crimes Code Title 18 (PA C.S.) Section §3121 is:

(a) Offense defined. – A person commits a felony of the first degree when he or she engages in sexual intercourse with a complainant:

(1) By forcible compulsion.

(2) By threat of forcible compulsion that would prevent resistance by a person of reasonable resolution.

(3) Who is unconscious or where the person knows that the complainant is unaware that the sexual intercourse is occurring.

(4) Where the person has substantially impaired the complainant's power to appraise or control his or her conduct by administering or employing, without the knowledge of the complainant, drugs, intoxicants or other means for the purpose of preventing resistance.

(5) Who suffers from a mental disability which renders the complainant incapable of consent.

(6) *(Repealed.)*

(b) Additional penalties.-- In addition to the penalty provided for by subsection (a), a person may be sentenced to an additional term not to exceed ten years' confinement and an additional amount not to exceed \$100,000 where the person engages in sexual intercourse with a complainant and has substantially impaired the complainant's power to appraise or control his or her conduct by administering or employing, without the knowledge of the complainant, any substance for the purpose of preventing resistance through the inducement of euphoria, memory loss and any other effect of this substance.

Indecent Assault

DEFINITION: Indecent Assault, according to the Pennsylvania Crime Code Title 18 (PA C.S.) Section §3126 is:

(a) Offense defined.—A person who has indecent contact with the complainant or causes the complainant to have indecent contact with the person is guilty of indecent assault if:

- (1) The person does so without the complainant's consent;
- (2) The person does so by forcible compulsion;
- (3) The person does so by threat of forcible compulsion that would prevent resistance by a person of reasonable resolution;
- (4) The complainant is unconscious or the person knows that the complainant is unaware that the indecent contact is occurring;
- (5) The person has substantially impaired the complainant's power to appraise or control his or her conduct by administering or employing, without the knowledge of the complainant, drugs, intoxicants or other means for the purpose of preventing resistance;
- (6) The complainant suffers from a mental disability which renders him or her incapable of consent;
- (7) The complainant is less than 13 years of age; or
- (8) The complainant is less than 16 years of age and the person is four or more years older than the complainant and the complainant and the person are not married to each other.

(b) Grading.—Indecent assault under subsection (a) (7) is a misdemeanor of the first degree. Otherwise, indecent assault is a misdemeanor of the second degree.

Sexual Assault Prevention Programs and Procedures

Pennsylvania Highlands Community College will act swiftly to protect the rights of its students. If you have been sexually assaulted there are a variety of campus and area resources that are available to you. The College supports your right to choose which avenues of assistance are best for you. These resources include the Office of Security and Safety, to whom all crimes (including sexual assaults) are reported, the local police agency with jurisdiction, and the emergency department of a local hospital. As a student who has been sexually assaulted you have the following rights:

1. To be given a copy of the College's sexual assault policy.
2. An opportunity to contact the governmental law enforcement authorities, including local police and District Attorney. Pennsylvania Highlands Community College will assist the student in notifying proper law enforcement officials.
3. If appropriate, arrange for transport to the nearest medical facility approved for the collection of rape evidence.
4. Awareness of mental health counseling in the community.

Students who have been sexually assaulted will be offered the opportunity to make a formal complaint through the College's judicial system against the offender, under the College's Student Code of Conduct. The College may pursue judicial charges regardless of whether any criminal charges are filed. The College's judicial process is not intended to serve as a substitute for the criminal justice system. The College will initiate internal judicial proceedings in incidents of sexual assault when a student requests it and/or when subsequent investigation produces substantial evidence of a violation of College policy. Students can view details in the Student Handbook. This includes the College's Sexual Misconduct policy, as well as complete information on the College's judicial process.

Students have the right to have any questions about College policy and the College judicial process answered. If a student who reports a sexual assault is harassed by anyone in connection with the incident in question, the harassment should be reported immediately to the Office of Security and Safety. The College would then respond to the allegations of harassment. Students have the option to have the victim's advisor with them at all times throughout such procedures. The accuser and the accused are entitled to the same opportunities to have others present during judicial disciplinary proceedings.

Both the accuser and the accused shall be informed of the outcome of any institutional disciplinary proceeding brought alleging a sex offense (the College's final determination and any sanction against the accused). A student found responsible for committing a sexual offense may be suspended and/or expelled from the College. Students, who are victims of sexual harassment or misconduct, may also request a change in academic arrangements if available.

Sex Offender Registry and Access to Related Information

The federal **Campus Sex Crimes Prevention Act**, enacted on October 28, 2000, became effective on October 28, 2002. The law requires institutions of higher education to issue a statement advising the campus community where law enforcement agency information provided by a State concerning registered sex offenders may be obtained. It also requires sex offenders already required to register in a State to provide notice, as required under State law, of each institution of higher education in that State at which the person is employed, carries on a vocation, or is a student.

In the Commonwealth of Pennsylvania, information regarding registered sex offenders who are subject to community notification may be obtained from a community member's respective local municipal police agency and/or the Pennsylvania State Police. PSP information concerning Megan's Law may be viewed on the Internet at <http://www.pameganslaw.state.pa.us/>.

Five-Step Sexual Assault Protocol - What To Do If You or a Friend Are a Victim of Sexual Assault

STEP A: Getting Safe and Contacting Authorities

1. Get to a safe place as soon as you can.
2. Contact someone you trust such as a close friend or family member to be with you through the various steps. Contact a hospital immediately. You may also want to contact the Johnstown Women's Help Center 1-800-999-7406, Huntingdon Victim Services (814) 443-1555/(800) 755-1983, or Huntingdon County Victim Services (814) 643-2801.

Emergency Contact Numbers

On-Campus Emergency Phone Numbers

(814) 262-6400	Main Number (Richland Campus)
(814) 262-6427 or ext. 5555	Office of Security and Safety (Richland Campus)
(814) 471-0010	Main Number (Ebensburg Education Center)
(814) 471-0030 or ext. 3333	Office of Security and Safety (Ebensburg Education Center)
(814) 643-6200	Main Number (Huntingdon)
(814) 443-2500	Main Number (Somerset)

Emergency and Police Phone Numbers

(9) 9-1-1	Cambria County fire, ambulance, and police (Dial "9" first from a campus phone to get an outside line)
(814) 472-8500	PA State Police, Ebensburg
(814) 627-3161	PA State Police, Huntingdon
(814) 445-4104	PA State Police, Somerset

Hospital Phone Numbers

(814) 534-9000	Conemaugh Memorial Medical Center
(814) 533-1000	Good Samaritan Medical Center
(814) 467-6611	Windber Medical Center
(814) 634-5911	Meyersdale Medical Center
(814) 443-5000	Somerset Hospital (Somerset Center)
(814) 643-2290	J.C. Blair Memorial Hospital (Huntingdon Center)

Pennsylvania Highlands Community College

(814) 262-6400	Main Number
(814) 471-0010	Ebensburg Educational Center Main Number

3. Preserve all physical evidence as much as possible. Do not use the toilet, bathe, wash, or change your clothing, if you can avoid it. If you do (or must) change clothes, put **all** the clothing you were wearing at the time of the attack in a paper bag. Please, **do not** use a plastic bag for this purpose as it degrades possible evidence.
4. As soon as possible, get medical attention in order to collect important evidence and ensure your physical well-being.
5. Contact the Office of Security and Safety by dialing ext. 6427 on any campus phone or call the local police by calling 9-911. (Remember you must dial "9" first to get an outside line from a College phone).

STEP B: Obtaining Medical Treatment

It is vitally important to seek immediate and follow-up medical treatment: (1) to determine and treat any physical injuries you may have sustained; (2) to determine the risk of sexually transmitted diseases

and/or pregnancy, and take appropriate preventative measures; and (3) to gather important evidence which will aid prosecuting the offender if you choose to pursue criminal charges.

NOTE: *Physical evidence should be collected immediately; within the first 24 hours is the ideal time frame. If the evidence is collected later than 24 hours, the quantity and quality of evidence will be diminished.*

After an assault, there is a special medical examination which should be conducted as soon as possible. This exam ensures your physical well-being. This exam is important even if you have not been physically injured as the exam is recommended to maintain all your legal options. All evidence will be maintained after collection in the event you desire to pursue criminal charges against the assailant. An emergency department physician or gynecologist will perform this exam. Throughout the procedure, a nurse is present and a support person of your choice can also be present. You can choose to have the exam conducted at any local hospital you prefer. All local hospitals' emergency departments follow national standards for evidence collection procedures, rape exams, and victim care.

NOTE: *As a matter of procedure, victims must be advised that the hospital will notify the police department in the jurisdiction in which the assault occurred as well as the local rape/sexual assault center if the victim has not already done this. A sexual assault advocate and the police will proceed to the hospital. However, victims are not required to furnish any information to the advocate or police.*

STEP C: Counseling and Emotional Support

If at the Richland Campus or the Ebensburg Education center, you can speak with a counselor by calling Victim Services of Johnstown at (814)535-2551 or 800-755-1983 (24 hours). Victim Services for Huntingdon can be contacted at (814) 643-2801. Also, Somerset Victim Services is available at (814) 443-1555 or (800) 755-1983.

STEP D: Reporting to the Office of Security and Safety

You can immediately report an incident at the Richland Campus by calling ext. 6427 and at the Ebensburg Education Center by dialing ext. 0030. A Security Officer is available to assist you. You (or another person) may make this report anonymously if desired. The information you provide will be handled in strictest confidence. An individual, who wishes to make a report at the Huntingdon and Somerset Centers, may contact the Director of the respective facility. The information will be relayed to the Director of Security and Safety.

To protect yourself and others from future victimization, you are highly encouraged to report the incident. Should you choose to report it, the Office of Security and Safety can arrange for a municipal police officer to take your statement as to what happened. The police officer will ask for a description of your assailant and/or ask you to identify the assailant--if you know your attacker. You may be asked if anyone else was present, where the crime occurred, the time of the attack, and any other pertinent information about the incident. If you desire, you may have a support person with you during this interview.

STEP: E: Criminal Investigation and Charges

If you wish to press charges regarding the incident, you must contact the Office of Security and Safety immediately. The Office will offer you information, assistance, and support throughout the criminal investigation process.

IMPORTANT PHONE NUMBERS

Office of Security and Safety	(814) 262-6427 (or ext. 6427 from on-campus phone)
Richland Township Police	800-281-1680 or <i>emergency</i> 911
Cambria Township Police	(814) 472-6040
Victim Services (Cambria County)	(814) 535-2551 (24 hours at 800-755-1983)
Pennsylvania Coalition Against Rape	(800) 692-7445 (24-Hour Hotline)
Victim Services (Huntingdon County)	(814) 643-2801
Victim Service (Somerset County)	(814) 443-1555/(800) 755-1983
Pennsylvania State Police (Ebensburg Barracks)	(814) 471-6500
Pennsylvania State Police (Huntingdon Barracks)	(814) 627-3161
Pennsylvania State Police (Somerset Barracks)	(814) 445-4104

ACCESS TO CAMPUS FACILITIES

Members of the College Community, guests and visitors have access to facilities during normal hours of business. Certain employees have been granted access to their offices and support spaces during non-operating hours through the use of the card access system while at the Richland Campus.

MAINTENANCE AND SECURITY OF CAMPUS FACILITIES

Pennsylvania Highlands Community College maintains a strong commitment to campus safety and security. As part of routine patrols, security officers inspect interior and exterior doors on campus facilities to ensure locking units are working properly. Exterior doors on all buildings are secured during non-operating hours. Security reports any door or lock issues immediately to the Director of Facilities and Operations for repair. Proper lighting is also an important component of an effective crime prevention program. Inspections of interior and exterior lighting are done on a regular basis. Parking lots and other public areas are routinely patrolled by security officers. These patrols are conducted at random to increase visibility and act as a preventive measure against would be vandals or thieves. All incidents are recorded immediately and are investigated by the Director of Security and Safety.

SECURITY AWARENESS AND CRIME PREVENTION PROGRAMS

Pennsylvania Highlands Community College constantly strives to be pro-active; preventing crimes from occurring instead of reacting to past crimes. The College routinely offers security and safety-related workshops for students. The Director of Security and Safety also conducts an orientation program for new students attending the first year experience course on a regular basis.

ON CAMPUS CRIME AND PREPARATION OF THE ANNUAL SECURITY REPORT

The Office of Security and Safety is committed to accurate reporting of crimes on campus. Statistics are compiled from information contained within official incident reports as well as data gathered from area law enforcement agencies. Each year the Director of Security and Safety will review the statistics collected and update the Annual Security and Safety Report in accordance with governing directives. Changes to 20 U.S.C. 1092 (F), Section 486(e), Disclosure of Campus Security Policy and Campus Crime Statistics have resulted in Pennsylvania Highlands Community College reporting crimes in three tables. Table one under Pennsylvania Statute and tables two and three under the 20 U.S.C. 1092 (f).

Crime statistics tables are provided for calendar years 2008, 2009 and 2010. These are posted in compliance with 20 U.S.C. 1092 Section (f) and the U.S. Department of Education guidelines. Additional information may be obtained by calling the Office of Security and Safety at (814) 262-6427.

2010 CRIME STATISTICS

2010 Criminal Offenses	Richland Campus		Ebensburg Education Center		Huntingdon Center		Somerset Center	
	On-Campus	Public Property	On-Campus	Public Property	On-Campus	Public Property	On-Campus	Public Property
Murder/Non-Negligent Manslaughter	0	0	0	0	0	0	0	0
Forcible Sex Offenses—including Rape	0	0	0	0	0	0	0	0
Non-Forcible Sex Offenses	0	0	0	0	0	0	0	0
Robbery	0	0	0	0	0	0	0	0
Aggravated Assault	0	0	0	0	0	0	0	0
Burglary	0	0	0	0	0	0	0	0
Motor Vehicle Theft	0	0	0	0	0	0	0	0
Arson	0	0	0	0	0	0	0	0
Negligent Manslaughter	0	0	0	0	0	0	0	0
Simple Assault	1	0	0	0	0	0	0	0
Liquor Law Violations	0	0	0	0	0	0	0	0
Drug Law Violations	0	0	0	0	0	0	0	0
Illegal Weapons Possessions	0	0	0	0	0	0	0	0
Theft	1	0	0	0	0	0	0	0

2009 CRIME STATISTICS

2009 Criminal Offenses	Richland Campus		Ebensburg Education Center		Huntingdon	
	On-Campus	Public Property	On-Campus	Public Property	On-Campus	Public Property
Murder/Non-Negligent Manslaughter	0	0	0	0	0	0
Forcible Sex Offenses—including Rape	0	0	0	0	0	0
Non-Forcible Sex Offenses	0	0	0	0	0	0
Robbery	0	0	0	0	0	0
Aggravated Assault	0	0	0	0	0	0
Burglary	0	0	0	0	0	0
Motor Vehicle Theft	0	0	0	0	0	0
Arson	0	0	0	0	0	0
Negligent Manslaughter	0	0	0	0	0	0
Simple Assault	0	0	0	0	0	0
Liquor Law Violations	0	0	0	0	0	0
Drug Law Violations	0	0	0	0	0	0
Illegal Weapons Possessions	0	0	0	0	0	0
Theft	0	0	0	0	0	0

2008 CRIME STATISTICS

2008 Criminal Offenses	Richland Campus		Ebensburg Education Center	
	On-Campus	Public Property	On-Campus	Public Property
Murder/Non-Negligent Manslaughter	0	0	0	0
Forcible Sex Offenses—including Rape	0	0	0	0
Non-Forcible Sex Offenses	0	0	0	0
Robbery	0	0	0	0
Aggravated Assault	0	0	0	0
Burglary	0	0	0	0
Motor Vehicle Theft	0	0	0	0
Arson	0	0	0	0
Negligent Manslaughter	0	0	0	0
Simple Assault	0	0	0	0
Liquor Law Violations	0	0	0	0
Drug Law Violations	0	0	0	0
Illegal Weapons Possessions	0	0	0	0